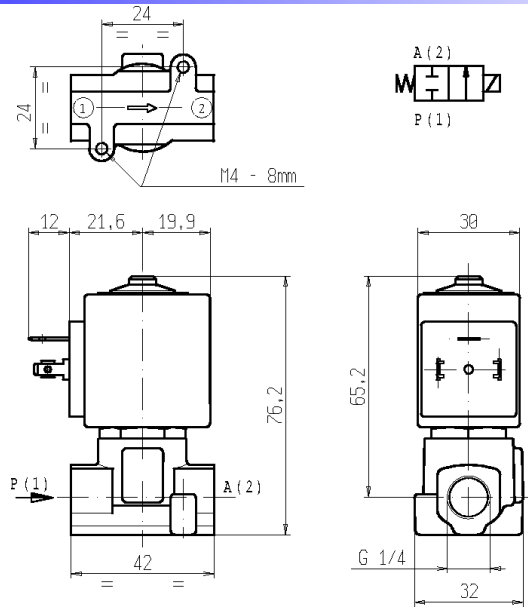




**SOLENOID VALVE**  
**2/2 - NC (Normally closed)**  
**Direct acting**  
**G 1/4**

**L121**



**► GENERAL FEATURES**

Direct acting solenoid valve.  
 Suitable to shut off liquid and gaseous fluids (verify the compatibility of fluid with materials in contact).

**► TECHNICAL FEATURES**

*Maximum allowable pressure (PS)*      40 bar  
*Opening time*                                 ~20ms  
*Closing time*                                  ~20ms

*Fluid temperature*                         -10°C +90°C (NBR)  
     0°C +130°C (FPM)  
     -10°C +140°C (EPDM)

*Max viscosity*                                5°E (~37 cStokes or mm<sup>2</sup>/s)

**► MATERIALS IN CONTACT WITH FLUID**

*Body*    Brass  
*Sealing*    NBR or FPM or EPDM  
*Internal components*                        Stainless steel  
*Seat*    Brass  
*Core tube*                                        Stainless steel  
*Shading coil*                                  Copper

**► COIL**

*According to standards*                    VDE  
*Continuous duty*                            ED 100%  
*Encapsulation material*                    PET (polybutylene-terephthalate) fiberglass reinforced  
*Insulation class*                              F (155 °C) on request class H (180°C) - UL  
*Ambient temperature*                       -10 C° +50 °C  
*Electric connenctions*                      DIN 46340- 3 poles connectors (DIN 43650)  
*Protection degree*                          IP 65 (EN 60529) with plug connector  
*Voltages*                                        DC      12-24V (+10% -5%)  
     AC      ZA30A: 24V/50Hz - 110V/50Hz (120V/60Hz) -  
     230V/50Hz (+10% -15%)  
     (Other voltages and frequencies on request).

Port size ISO 228	Orifice size (mm)	Differential pressure (bar)				Kv (m <sup>3</sup> /h)	Series and type		Power absorption			Sealings	Notes	Weight (kg)							
		Δp min	Δp max		Valve		Coil	AC (VA)		DC (W)											
			AC	DC				Inrush	Holding												
G 1/4	1,6	0	30	30	30	30	L121V02	ZA30A	23	14	9	FPM	1	0,300							
															2,3	20	16	20	16	0,15	L121B02
	3,2		12	4	12	4															
															4,5	6	2	6	2	0,40	L121V02
	-		7	-	7	-	0,30	L121B02	ZA30A	23	14	9	FPM								
															-	3	-	3	-	0,40	L121D02
	-	-	-	-	-	0,40	L121V02	ZA30E	-	-	12	FPM	2								
															-	-	-	-	-	0,40	L121D02

**► NOTES**

- Sealings : NBR = Nitrile-butylene elastomer    FPM = Fluoro-carbon elastomer    EPDM = Ethylene-propylene elastomer  
 1 - On request special coil ZA32A, class "F", with UL or VDE approved windings - see overleaf.  
 2 - Model available on request only: ask for minimum quantity.

# L121

## ► SPECIAL COIL ZA32A

Continuous duty ED 100%

Encapsulation material PET (polyethylene terephthalate) fiberglass reinforced

Coil insulation class F (155 °C)

Ambient temperature -10 °C +50 °C

Ambient temperature DIN 46340- 3 poles connectors (DIN 43650)

Electric connenctions IP 65 (EN 60529) with plug connector

Voltagess AC 24V/50-60Hz (VDE) • 100V/50-60Hz • 115-120V/60Hz (UL) • 200V/50-60Hz • 220-230V/50Hz - 208-240V/60Hz (UL) • 220-240V/50Hz (VDE) • (+10% -15%)

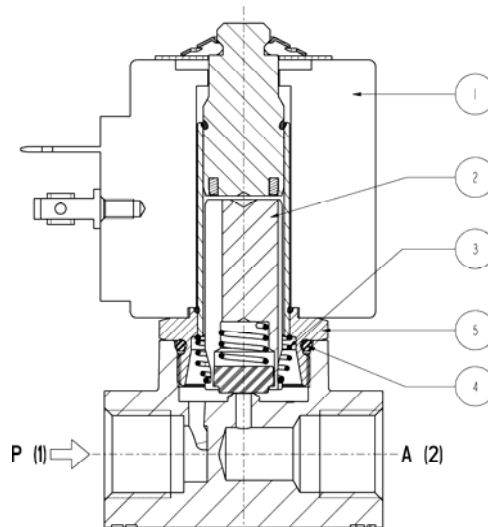
Port size ISO 228	Orifice size (mm)	Differential pressure (bar)				Kv (m³/h)	Series and type		Power absorption			Sealings	Notes	Weight (kg)
		Δp min	Δp max				Valve	Inrush	Holding	DC (W)				
			Gases		Liquids									
			AC	DC	AC						DC			
G 1/4	1,6	0	30	-	30	-	0,09	L121V02	23	14	-	FPM	-	0,300
	2,,3		16	-	16	-	0,15	L121B02				NBR	1	
								L121V02				FPM	-	
								L121D02				EPDM		
								L121B02				NBR		
	3,2		9	9	0,30	L121V02	FPM							

## ► NOTES

- Sealings : NBR = Nitrile-butylene elastomer FPM = Fluoro-carbon elastomer EPDM = Ethylene-propylene elastomer

1 - Model available on request only: ask for minimum quantity.

## ► SPARE PARTS



## Kit description

Core kit

L121B02  
L121V02  
L121D02

## Kit P.N.

G3022804  
G3022803  
G3022801

## Consisting of:

Core (with core return spring) pos. 2  
OR guide assembly pos. 4

Core return spring kit

G3022401

N.10 core return spring pos. 3

OR guide assembly kit

L121B02  
L121V02  
L121D02

GU2421000017  
GU2424000017  
GU2423000017

N.10 OR guide assembly pos. 4

Guide assembly

3008301R

Guide assembly pos. 5

Coil

ZA30A  
ZA30E  
ZA32A

Coil pos. 1

## ► MOUNTING

Solenoid valve can be mounted in any position; vertical with coil upwards preferred.